

1. (General Information)

The DC to AC inverter is designed as a low noise high frequency and as a low profile and light weight switching power supply.

2. (Features)

Applicable TO Dual Tube

Constant current output

Possesses open load protection

No load –output auto stop

Meet TCO 99

3. LCD (Application)

LCD Size	Lcm Model	Brand	Remark
10.4"	PD104SL5	PRIME VIEW	
	B104SN02	AUO	
	NL10276BC20-04	NEC	

4. (Operating Conditions)

Item	Symbol	Conditions	MIN	MAX	Unit	Remark
Input Voltage	Vin		9.0	-	V	
Operating Temperature	Top	Ha=90%RH	0	65	°C	
Storage Temperature	Tstg	Ha=95%RH	-10	80	°C	
Operating Humidity	Hop	Ta=0~55 °C	20	90	%RH	
Storage Humidity	Hstg	Ta=20~80 °C	-	95	%RH	

5. (Operating Characteristics)

Item	Symbol	Conditions	MIN.	TYP.	MAX.	Unit	Remark
Input Voltage	Vin	GND=0V	10.8	12	13.2	V	
Input Current (Low Brightness)	IinL	Vin=TYP. ±1% ON VR=MIN (Iout=MIN)	260	330	400	mA	
Input Current (High Brightness)	IinH	Vin=TYP. ±1% ON VR=MAX (Iout=MAX)	600	680	780	mA	
Lamp Current (Low Brightness)	IoutL	Vin=TYP. ±1% ON VR=MIN (Iout=MIN)	2.4	3.0	3.5	mA rms	(single Lamp)
Lamp Current (High Brightness)	IoutH	Vin=TYP. ±1% ON VR=MAX (Iout=MAX)	5.8	6.2	6.6	mA rms	(single Lamp)
Working Frequency			40	45	50	KHZ	
Dimming		Tube Current	>2:1	-	-		
Brightness Control		Connection of Voltage	5	-	0	V	
Output Voltage		CCFT Current =5 mA	-	630	-	V	

6. (Connector Socket)

6-1. (P1) Input Connector FOR NEC LCD

PIN No	Symbol	Description
1	Vin	DC+12V
2	GND	Ground
3	Control	ON/OFF control ON=+5V OFF=0V
4	Brightness	Digital Brightness Control
5	GND	Ground

6-2 (P2) Output Connector

PIN No	Symbol	Description
1	Output	Lamp Low Voltage
2	Output	Lamp High Voltage
3	Output	Lamp High Voltage

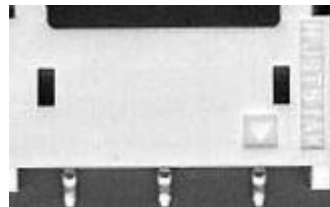
6-3 Connector Model No & Brand

Connector No.	Connector Parts No	Brand
P1	S5B-PH-SM3	JST
P2	SM03(4.0)	JST



S5B-PH-SM3

(pin1)



SM03(4.0)

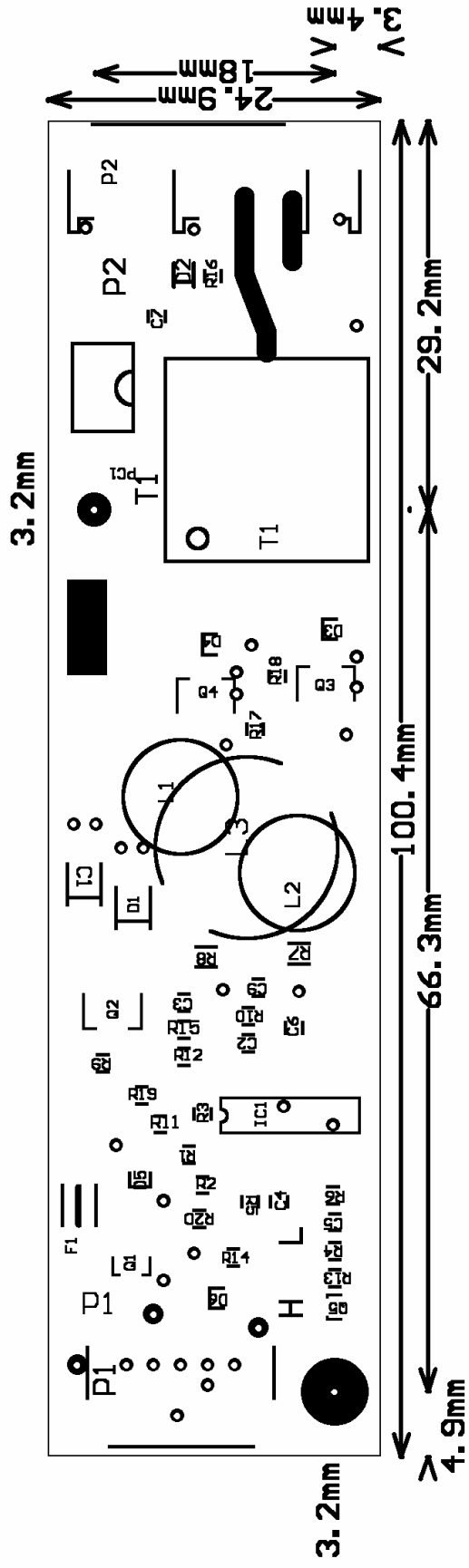
(pin1)

7. Mechanical Characteristics

Dimension: 100.5mm * 25mm * 10mm

Weight: MAX. 15g

PCB DIMENSION



Sticker Description

(Model number)

(Version number)

QF63V2.03A
VX 0115

(Lot number)

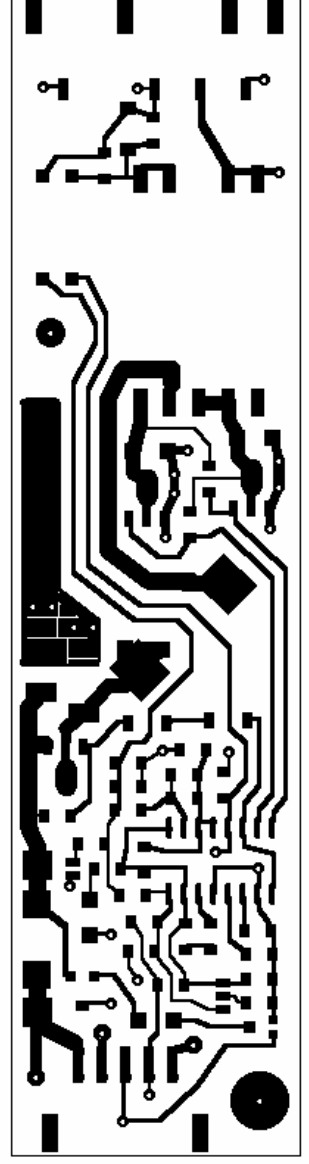
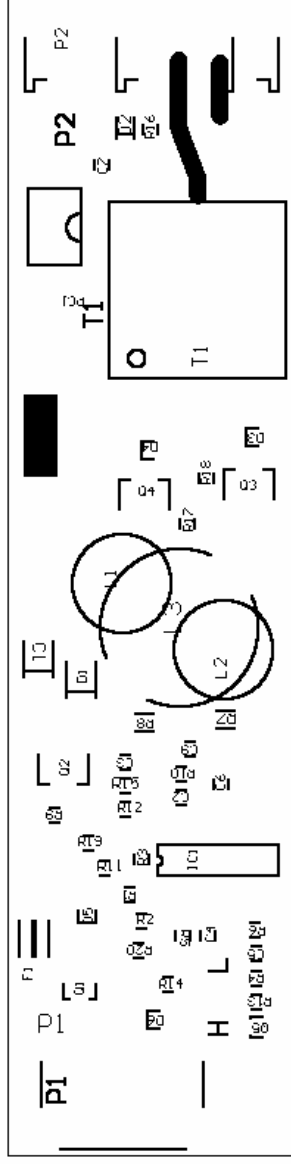
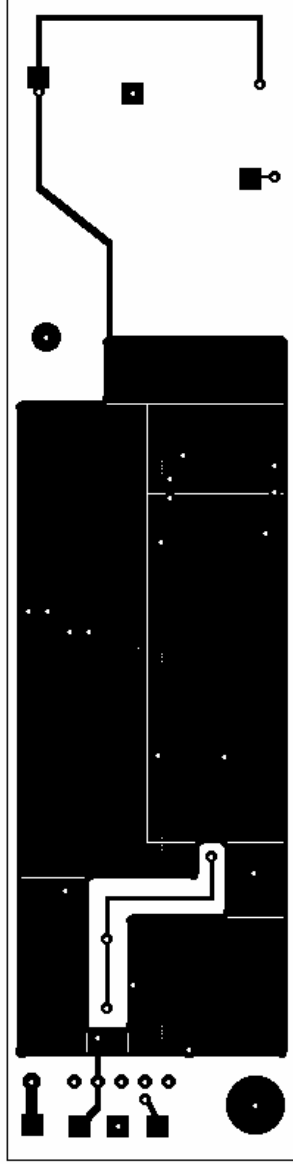
Year Date

Manufacture date

01 = 2001

15 = 15th week of 2001

PCB LAYOUT



ITEM	MATERIAL	CLASS	UL FILE NO	MANUFACTURER
1.FERRITE CORE	2F8			TOMITA
	NC-2H			NICERA
2.BOBBIN	LCP (94V-0) E4008L	130°C	E54705(M)	SUMITOMO CHEMICAL CO LTD
	(94V-0) PM9630	150°C	E41429(M)	SUMITOMO BAKELITE CO LTD
3.TAPE	3M NO.1350(b)	130°C	E17385(N)	MINNESOTA MINING & MFG CO ELECTRICAL SPECIALTIES DIV
4.WIRE	POLYURETHANE ENAMELLED COPPER UEW-2	130°C	E79029(S)	TOTOKU ELECTRIC CO.LTD
	DD	130°C		PACIFIC ELECTRIC WIRE & CABLE CO.LTD
5.VARNISH	BC-359	130°C	E51047(M)	JOHN C DOLPH CO
	BC-346A	200°C	E51047(M)	JOHN C DOLPH CO
6.COVER	LCP(94V-0) E4008L	130°C	E54705(M)	SUMITOMO CHEMICAL CO LTD
7.EPOXY	R-10(94V-0)	160°C	E70012(M)	ZU YU CHEMICAL CORP.