

ICOP-6053

**Embedded 386SX PC/104 All-in-One CPU
Module with 2S/ DOC/ 4M RAM onboard/
Ethernet**

User' s Manual

(Version 3.2)

Copyright Notice

This document is copyrighted, 2000 by ICOP Technology Inc. All rights are reserved. The information in the manual is subject to change without notice in order to improving products.

No part of this manual may be reproduced, copied, translated or transmitted in any form or by any means without the prior written permission of the manufacturer.

ICOP Technology Inc. assumes no responsibility for any inaccuracies that may be contained in this document. ICOP Technology Inc. makes no commitment to update or to keep current the information contained in this manual.

**ã Copyright 2000 by ICOP Technology Inc.
All rights reserved. Ver.2.1 2000,
Printed in Taiwan**

Trademarks Acknowledgments

All brand names and trademarks are the properties and registered brands of their respective owners.

Table of Contents

Chapter 0 Startup

| | |
|-----------------------------|---|
| 0.1 Packing List..... | 1 |
| 0.2 Specifications..... | 2 |
| 0.3 Component Location..... | 3 |

Chapter 1 Introduction

| | |
|-------------------------------------|---|
| 1.1 Features..... | 4 |
| 1.2 Specifications..... | 5 |
| 1.3 DiskOnChip 2000 Flash Disk..... | 7 |
| 1.4 Network Interface | 8 |

Chapter 2 Installation

| | |
|--|----|
| 2.1 Jumper Settings..... | 9 |
| 2.1.1 ICOP-6053..... | 10 |
| 2.2 Connectors..... | 11 |
| 2.2.1 ICOP-6053..... | 11 |
| 2.3 DiskOnChip/EPROM/Flash ROM Disk..... | 12 |
| 2.3.1 Setup a DiskOnChip ®2000 Flash Disk..... | 12 |
| 2.3.2 Setting up a Flash Disk..... | 14 |
| 2.4 Watchdog Timer..... | 12 |

Chapter 3 Network Interface

| | |
|---------------------------|----|
| 3.1 Introduction..... | 22 |
| 3.2 Software Support..... | 22 |

Appendix Pin Assignments

| | |
|---|----|
| IDE Interface Connector..... | 23 |
| Floppy Disk Connector..... | 24 |
| Parallel Port Interface..... | 25 |
| Serial Port Interface..... | 26 |
| Keyboard and PS/2 Mouse Connector | 27 |
| PC/104 Connectors..... | 28 |

Warranty

Chapter 0

Startup

0.1 Packing List

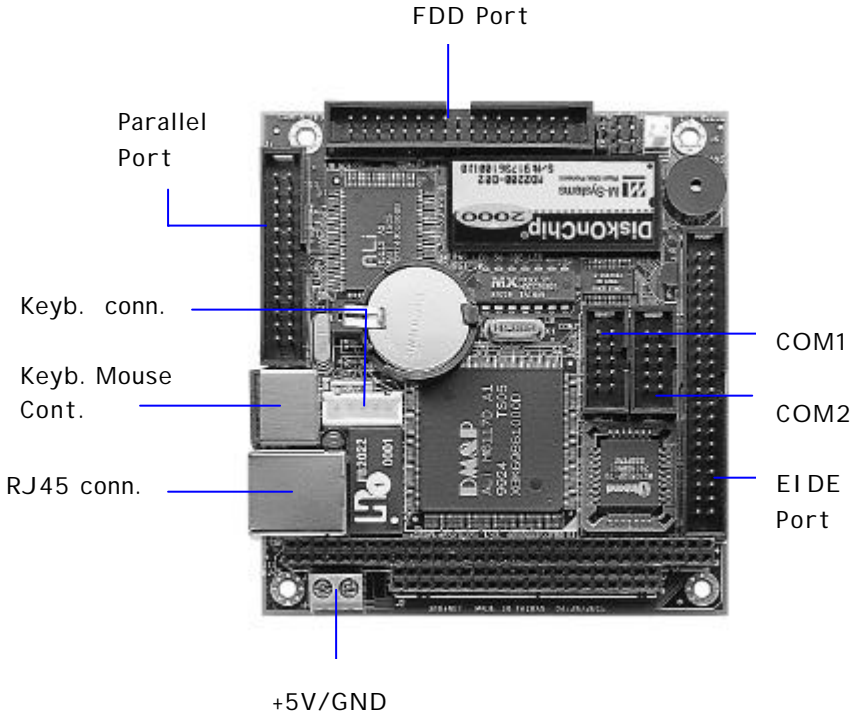
| Product Name | Function | Package |
|--------------|--|--|
| ICOP-6053 | Embedded 386SX PC/104 All-in-One CPU Module | <ul style="list-style-type: none">● ICOP-6053 Embedded 386SX PC/104 All-in-One CPU Module● Utility and Drivers Diskette x 1● FDD cable x 1● HDD cable x 1● RS232 cable x 2● Printer cable with bracket x 1● AT KB/ PS2 Mouse Y-cable x 1 |

0.2 Specifications

| Features | ICOP-6050 |
|-----------------------------------|-----------------------------|
| Chipset | DM&P(ALi) M6117D |
| Processor | 386SX-40 on-die |
| Multi I/O Chip | ALi 5113 |
| BIOS | AMI BIOS |
| Watchdog Timer | From 30.51 s to 512 seconds |
| Bus Interface | PC/104 standard compliant |
| RAM | 4MB onboard |
| Display | X |
| Enhanced IDE Port | 1 |
| Floppy Connector | 1 |
| Flash Disk / DiskOnChip Socket | 1 |
| Network chipset | Realtek 8019AS |
| Network interface | RJ45 |
| Serial Port | RS232 X 1, RS232/485 X 1 |
| Parallel Port | 1 |
| Power Requirement | +5V @0.8A |
| Board Weight | 105g |
| Board Size | 90mm x 96mm |

0.3 Component Location

ICOP-6053



Chapter 1

Introduction

1.1 Features

- PC/104 (96x90 mm) Embedded CPU Module
- PC/104 connector
- DM&P (ALi) M6117D Embedded CPU, 100% compatible with 386SX-40 CPU
- 4MB EDO RAM onboard
- Enhanced IDE devices and FDD interface
- One Bi-directional Parallel Port
- RS-232 interface
- RS-232/485 interface
- Watchdog timer
- Socket for Flash or DiskOnChip
- Onboard Keyboard, Mouse header
- Onboard Ethernet, compatible with NE2000
- Single voltage +5 V power connector
- Operating temperature from -20~+60 °C
- Flexible OEM/ODM design

1.2 Specifications

- **Embedded CPU:** DM&P(ALi) M6117D is an implementation of an INTEL compatible 386SX-40 CPU, Realtime clock, a watchdog timer and ALi' s M1217B chipset
- **BIOS:** Y2K compliant AMI system BIOS
- **DRAM Memory:** 4MB EDO DRAM onboard
- **Bus Interface:** PC/104
- **Data Bus:** 16-bit
- **Bus Speeds:** PC/104 - 8 MHz

(above values are defaults, bus speeds are programmable up to 16 MHz)

- **DMA Channels:** 7
- **Interrupt Levels:** 15
- **Enhanced IDE:** supports one port and up to two hard drives or Enhanced IDE devices of PIO mode 4. BIOS enabled/disabled
- **Watchdog Timer:** generates either a RESET, NMI or an IRQ when your application loses control over the system. Optionally the watchdog can trigger a user specified interrupt. The watchdog is configurable from 30.5 ì s to 512 seconds (in 30.5 ì s segments)
- **Real-time Clock:** included in M6117D with onboard lithium battery backup for 10 years of data retention. CMOS data backup of BIOS setup and BIOS default.
- **Keyboard and Mouse Connectors:**

External 6 pin Mini DIN for AT-keyboard , PS/2 Mouse

Internal 5-pin header for AT-keyboard

Internal 5-pin header for PS/2-mouse

High Speed Multi I/O

- **Chipset:** ALi 5113 or SMS CFDC37C669
- **Serial ports:** one high speed RS-232 port, one high speed RS-232/485 port (jumper selectable). Both with 16C550 UART and 16 byte FIFO. BIOS enabled/ disabled
- **Floppy Disk Drive Interface:** supports up to two floppy drives, 5¼" (360 KB or 1.2 MB) and 3½" (720 KB, 1.44 MB). BIOS enabled / disabled

- **Bi-directional Parallel Port:** supports SPP, EPP and ECP mode. BIOS enabled/disabled

Environmental and Power

- **Power Requirements:**

single voltage +5 V

- **Board Dimensions:** 90 (L) x 96 (W) mm.
- **Board Weight:** 105 g
- **Extended Operating Temperature:** -20~+60 °C

1.3 DiskOnChip 2000 Flash Disk

Flash Disk DiskOnChip ® 2000

- **Package:** Single Chip FlashDisk in 32-pin DIP JEDEC
- **Capacity:** 1-144 MByte capacity
- **Data Reliability:** ECC/EDC error correction
- **Memory Window:** 8 Kbyte

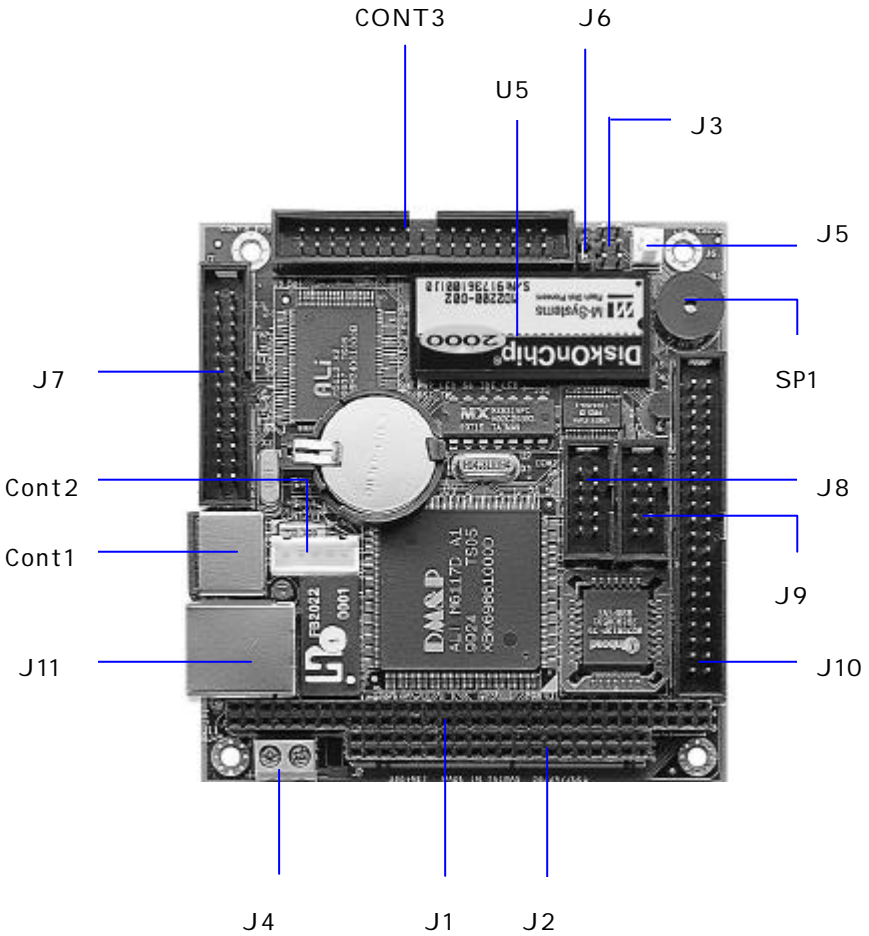
1.4 Network Interface

- **Chipset:** Realtek 8019AS single chip
- **Type:** 10BASE-T
- **Connectors:** onboard RJ-45 and BNC connectors
- **Monitoring LEDs:** network ready indicator, network activity indicator
- **Compatibility:** NE2000

Chapter 2

Installation

2.1 Jumper Settings



2.1.1 ICOP-6053

- J6** RS-232/485 selection for COM2
- 1-2:** RS-232 mode (J9 active)
 - 2-3:** RS-485 mode (J5 active)
-
- J3** **1-2:** RESET SWITCH
- 3-4:** Power LED
 - 5-6:** IDE LED

2.2 Connectors

2.2.1 ICOP-6053

| | |
|--------------|-----------------------------------|
| J1 | PC/104 bus 64-pin |
| J2 | PC/104 bus 40-pin |
| J4 | Power conntcotr |
| J5 | COM2 RS-485 |
| J7 | Parallel port |
| J8 | COM1 RS-232 |
| J9 | COM2 RS-232 |
| J10 | IDE connector |
| J11 | RJ45 connector |
| Cont1 | AT-keyboard, PS/2 mouse connector |
| Cont2 | keyboard connector |
| Cont3 | Floppy Disk connector |
| SP1 | Buzzer |
| U5 | DishOnChip/Flash Disk socket |
| COM1 | COM1 RS-232 |
| COM2 | COM2 RS-232 |
| P1 | Parallel Port |

2.3 DiskOnChip/EPROM/Flash ROM Disk

2.3.1 Setup a DiskOnChip ® 2000 Flash Disk

Installation Instructions

1. Make sure the ICOP-605X is powered OFF
2. Plug the DiskOnChip 2000 device(s) into its socket. Verify the direction is correct (pin 1 of the DiskOnChip 2000 is aligned with pin 1 of the socket)
3. Set address for both DiskOnChip and Flash Disk devices as below instructions:

Step1: Enter to AMI BIOS Setup Utility while system power on

Step2: Enter to "Advanced Chipset Setup"

Step3: Select "GPCS Function" to "Enable"

(For DiskOnChip)

Step4: Select "GPCS0 Command" to "MEMR/W 8bit"

Step5: Select "GPCS0 Start Address" to "0C8000 HEX"

Step6: Select "GPCS0 Size" to "8 KBYTE" (goto Step 10)

(For Flash Disk)

Step4: Select "GPCS0 Command" to "MEMR/W 8bit"

Step5: Select "GPCS0 Start Address" to "0E0000 HEX"

Step6: Select "GPCS0 Size" to "64 KBYTE"

Step7: Select "GPCS1 Command" to "IOW 8bit"

Step8: Select "GPCS1 Start Address" to "000100 HEX"

Step9: Select "GPCS1 Size" to "2 BYTE"

Step10: Save changed and exit.

4. Power up the system
5. During power up you may observe the messages displayed by the DiskOnChip 2000 when its drivers are automatically loaded into system' s memory
6. At this stage the DiskOnChip 2000 can be accessed as any disk in the system
7. If the DiskOnChip 2000 is the only disk in the system, it will appear as the first disk (drive C: in DOS)
8. If there are more disks besides the DiskOnChip 2000, the DiskOnChip 2000 will appear by default as the last drive, unless it was programmed as first drive. (please refer to the DiskOnChip 2000 utilities user manual)

9. If you want the DiskOnChip 2000 to be bootable: a - copy the operating system files into the DiskOnChip by using the standard DOS command (for example: sys d:) b - The DiskOnChip should be the only disk in the systems or should be configured as the first disk in the system (c:) using the DUPDATE utility

For more information on DiskOnChip2000 technology, visit M-Systems Web site **http:// www.m-sys.com** where you can find Utilities Manual, Data Sheets and Application Notes. In addition, you can find the latest DiskOnChip 2000 S/W Utilities.

2.3.2 Setting up a Flash Disk

Before you can use the ICOP-605X's Flash disk you will have to initialize it using a software utility called "PC104.EXE". This program can be found on the utility disk in the subdirectory "A:\FLASH"

- Connect a keyboard and floppy disk ICOP-605X to the PC/104 bus and boot-up your system.

- run PC104.EXE (this is a DOS command line utility)

```
ICOP-605X FLASH disk initialize program V1.0
```

```
FLASH manufacturer : (1)ATMEL (2)SST
```

```
Input manufacturer number (1,2) : 1
```

```
Input quantity of FLASH (1,2) : 2
```

```
Simulation disk:
```

```
(1)DISK-A (2)DISK-B (3)DISK-C (4)DISK-D
```

```
Input manufacturer number (1,2,3,4) : 1
```

```
FLASH-DISK initialize finish.
```

(Text in bold should be entered by user)

- After running the PC104.EXE configuration program reboot the system, while holding down the left "Ctrl" key. This will bring you to the "Flash Disk Utility"

- "CHANGE CURRENT DISK NUMBER" lets you select the drive you want to assign to the disk, either A, B, C or D

- "CHANGE FLASH DISK SIZE" lets you select the amount of Flash EPROM chips that are onboard.

- make selections and reboot the system after closing the program

Your disk can now be formatted and setup with normal DOS commands such as

FORMAT, FDISK, COPY, SYS etc.

Note : when assigning the solid state disk as either C or D, you first have to run FDISK before formatting the drive !

2.4 Watchdog Timer

The watchdog timer uses a 32.768 KHz frequency source with a 24-bit counter. Its time range stretches from 30.5 ms to 512 sec. with a resolution of 30.5 ms. When the watchdog times out a System RESET, NMI or IRQ can be invoked. Watchdog timer control and the 24-bit counter itself occupy 6 consecutive 8-bit address locations.

When functioning properly the system resets the watchdog timer periodically to prohibit that it times out. If the watchdog timer times out, it will RESET the system, or generate and NMI or IRQ, depending on its configuration.

Watchdog or System Timer

Another great application is to generate a periodic IRQ signal. Under DOS environment, the 8254, system timer 0, will generate IRQ0 every 54.9 ms. The watchdog is like system timer 0. It can be programmed to periodically generate a configurable IRQ. It may be clear that the selected IRQ, will be no longer available to the system.

Configuring the Watchdog Timer in the BIOS

The M6117D watchdog configuration register can be controlled by software or can be setup in the BIOS. To do so go to BIOS Setup' s "Advanced Chipset Setup"

Watchdog Function = Enable/Disable

Watchdog Signal = RESET, NMI or IRQ 3/4/5/6/7/9/10/11/12/14/15

Watchdog Timer = 1/2/4/8/16/32/64/128/256/512 Seconds

The BIOS setup only offers a limited amount of time-out values. More a higher resolution of timeout values refer to the next paragraph "Configuring the Watchdog Timer by Software" Note that in case of using the BIOS setup, the watchdog starts counting the moment it passes the BIOS setup. This means that if you set the time-out period to 1 second, the system will keep rebooting before being able to load operating system or software !

After you have finished configuring you watchdog timer read "Timeout Status & Reset - INDEX 3CH" on page 12 and look at the example on page 15 to find out how to periodically resetting the timeout status to prevent the watchdog timer from invoking a RESET, NMI or IRQ.

Configuring the Watchdog Timer by Software

Chipset configuration registers

The M6117D configuration register INDEX 37H, 38H, 39H, 3AH, 3BH, 3Ch

are used to control the watchdog functions and/or display its current status.

Enable/Disable watchdog - INDEX 37H

| Bit | Value | Action |
|-----|----------------|--|
| 7 | reserved | Do not modify the value of these bits! |
| 6 | 0 | Disable watchdog timer |
| | 1 | Enable watchdog timer |
| 5-0 | Other function | Do not modify the value of these bits! |

Watchdog time out action - INDEX 38H

| Bit | Value | Action |
|-----|----------------|--|
| 7-4 | 0000 | No output signal |
| | 0001 | IRQ3 |
| | 0010 | IRQ4 |
| | 0011 | IRQ5 |
| | 0100 | IRQ6 |
| | 0101 | IRQ7 |
| | 0110 | IRQ9 |
| | 0111 | IRQ10 |
| | 1000 | IRQ11 |
| | 1001 | IRQ12 |
| | 1010 | IRQ14 |
| | 1011 | IRQ15 |
| | 1100 | NMI |
| | 1101 | System RESET |
| | 1110 | No output signal |
| | 1111 | No output signal |
| 3-0 | Other function | Do not modify the value of these bits! |

Watchdog timer - INDEX 39H, 3AH, 3BH

| | | | |
|--------------|------------|------------|------------|
| Index | 3Bh | 3Ah | 39h |
| Bits | D7D0 | D7D0 | D7D0 |
| counter | [VSB | |LSB] |

For example

| Index | 3Bh | 3Ah | 39h | Time out |
|-------|-----|-----|-----|----------|
| | 00h | 00h | 01h | 30.5i s |
| | 00h | 00h | 02h | 61i s |
| | 00h | 01h | 00h | 7.8 ms |
| | 00h | 02h | 00h | 15.6 ms |
| | 01h | 00h | 00h | 2 s |
| | 02h | 00h | 00h | 4 s |
| | FFh | FFh | FFh | 512 s |

Timeout Status & Reset - INDEX 3CH

| Bit | Value | Action |
|-----|-------|--|
| 7 | 0 | Timeout has not occurred |
| | 1 | Timeout has occurred |
| 6 | 1 | Reset timer |
| | 0 | Has no meaning |
| 5-0 | | Other function, do not modify these bits |

Programming the watchdog

To perform any operation on the M6117D configuration registers you always have to unlock first and lock the registers afterwards

Unlock configuration register

```
mov al, 013h
out 22h, al
nop
nop
```

Lock configuration register

```
mov al, 013h
out 22h, al
nop
nop
```

```
mov al, 0c5h                mov al, 000h
out 23h, al                 out 23h, al
nop                          nop
nop                          nop
```

Read the value of a configuration register

For example, read INDEX 3Ch :

Unlock configuration register

```
mov al, 03ch
out 22h, al
nop
nop
in al, 23h
nop
nop
push ax
```

Lock configuration register

```
pop ax ;AL - result
```

Write data to configuration register

For example, write 0FFh to INDEX 3Bh :

Unlock configuration register

```
mov al, 03bh
out 22h, al
nop
nop
mov al, 0ffh
out 23h, al
nop
nop
```

Lock configuration register

Watchdog Program Example

We use the following sequence to initialize the watchdog timer:

- (1) Unlock configuration register.
- (2) Disable watchdog timer by setting INDEX 37H Bit 6 to '0'.
- (3) Set the expected counter value to INDEX 3BH, 3AH, 39H.
- (4) Select timeout action from INDEX 38H Bit 7-4.
- (5) Enable watchdog timer by setting INDEX 37H Bit 6 to '1'.
- (6) Lock configuration register.

Example: Set timeout to 128 sec to generate a system RESET.

; Please use MASM to compiler the following program

; Execute under DOS environment

dosseg

. model small

. stack 100h

.code

main proc

mov ax, 0c513h ; Unlock config. register

call writechip

mov ax, 03737h ; Disable watchdog timer

call readchip

and al, 10111111b

xchg ah, al

call writechip

mov ax, 0403bh ; Set the expected counter

; value

call writechip ; to [400000h]

mov ax, 0003ah ; 30.5*sec*400000h= 128 sec

call writechip

```

mov ax, 00039h
call writechip
mov ax, 03838h ; Select "system reset" as
                ; timeout action
call readchip
and al, 00001111b
or al, 11010000b
xchg ah, al
call writechip
mov ax, 03737h ; Enable watchdog timer
call readchip
or al, 01000000b
xchg ah, al
call writechip
mov ax, 00013h ; Lock config. register
call writechip
mov ax, 04c00h
int 21h
main endp

readchip proc
    out 22h, al
    nop
    nop
    in al, 23h
    nop
    nop
    ret
readchip endp

```

```

writechip proc
    out 22h, al
    nop
    nop
    xchg ah, al
    out 23h, al
    nop
    nop
    xchg ah, al
    ret

```

```
writechip endp
```

```
end main
```

Reset watchdog timer

Resets the watchdog timer periodically to prevent timeout.

```

    mov ax, 0c513h ; Unlock configuration
                    ; register
    call writechip
    mov ax, 03c3ch ; Reset watchdog timer
                    ; counter
    call readchip
    or al, 01000000 ; The counter is reset at
    xchg ah, al ; out 23h, al
    call writechip
    mov ax, 00013h ; Lock configuration
                    ; register
    call writechip

```

(the above code uses readchip and writechip procedures)

Chapter 3

Network Interface

3.1 Introduction

The Realtek RTL-8019AS 10Mbps Ethernet controller board supports both 10BASE-T and Coax 10Base-2 ' BNC' connectors, and allows direct connection to your 10Mbps Ethernet based Local Area Network for full interaction with local servers, wide area networks such as the Internet.

I/O and IRQ settings can be done by software with the supplied utility software, or it can be set for Plug and Play compatibility. The controller supports : Full-Duplex Ethernet function to double channel bandwidth, auto media detection.

3.2 Software Support

On-board EEPROM (93C46) programming

Setup/Diagnostic program for DOS

Help utility for easy installation

RPL boot ROM for Novell Netware, Microsoft NT

NDIS2 (DOS,OS/2,Lantastic,WFW3.11 K i K)

NDIS3,NDIS4,NDIS5 for WIN95,98,NT3.51,4.0,5.0,WFW3.11

Netware 16-bit ODI driver for DOS,OS/2 and 32-bit ODI driver for Netware 3.x,4.x,5.0 Server

Packet driver for UNIX Client

SCO Unix driver

Linux driver

All operating systems that support standard NE2000

Appendix

Pin Assignments

IDE Interface Connector

| Pin | Description | Pin | Description |
|-----|-------------|-----|----------------|
| 1 | Reset | 2 | GND |
| 3 | Data 7 | 4 | Data 8 |
| 5 | Data 6 | 6 | Data 9 |
| 7 | Data 5 | 8 | Data 10 |
| 9 | Data 4 | 10 | Data 11 |
| 11 | Data 3 | 12 | Data 12 |
| 13 | Data 2 | 14 | Data 13 |
| 15 | Data 1 | 16 | Data 14 |
| 17 | Data 0 | 18 | Data 16 |
| 19 | GND | 20 | N/C |
| 21 | N/C | 22 | GND |
| 23 | IOW # | 24 | GND |
| 25 | IOR # | 26 | GND |
| 27 | N/C | 28 | BALE -Default |
| 29 | N/C | 30 | GND-Default |
| 31 | Interrupt | 32 | IOCS16-Default |
| 33 | SA1 | 34 | N/C |
| 35 | SA0 | 36 | SA2 |
| 37 | HDC CS0 | 38 | HDC CSI # |
| 39 | HDD Active | 40 | GND |

Floppy Disk Connector

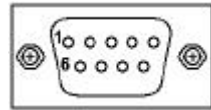
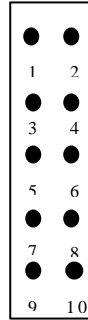
| Pin | Description | Pin | Description |
|-----|-------------|-----|---------------------|
| 1 | GND | 2 | Drive Enable Select |
| 3 | GND | 4 | N/C |
| 5 | GND | 6 | N/C |
| 7 | GND | 8 | Index # |
| 9 | GND | 10 | Drive select 0 |
| 11 | GND | 12 | Drive select 1 |
| 13 | GND | 14 | Drive select 2 |
| 15 | GND | 16 | Motor enable |
| 17 | GND | 18 | Direction # |
| 19 | GND | 20 | STEP # |
| 21 | GND | 22 | Write data # |
| 23 | GND | 24 | Write gate # |
| 25 | GND | 26 | Track 0 # |
| 27 | GND | 28 | Write protect # |
| 29 | GND | 30 | Read data # |
| 31 | GND | 32 | Side 1 select # |
| 33 | GND | 34 | Disk change # |

Parallel Port Interface

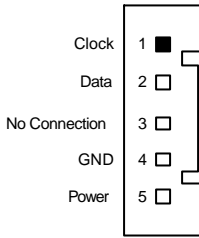
| Pin | Description | Pin | Description |
|-----|---------------------|-----|------------------|
| 1 | Strobe | 2 | Data 0 |
| 3 | Data 1 | 4 | Data 2 |
| 5 | Data 3 | 6 | Data 4 |
| 7 | Data 5 | 8 | Data 6 |
| 9 | Data 7 | 10 | Acknowledge # |
| 11 | Busy | 12 | Paper Empty # |
| 13 | Printer Select | 14 | Auto Form Feed # |
| 15 | Error # | 16 | Initialize # |
| 17 | Printer Select In # | 18 | GND |
| 19 | GND | 20 | GND |
| 21 | GND | 22 | GND |
| 23 | GND | 24 | GND |
| 25 | GND | 26 | NC |

Serial Port Interface

| 10- Pin | D-Type | Description |
|---------|--------|----------------------------------|
| 1 | 1 | Data Carrier Detect (DCD)/5V/12V |
| 2 | 2 | Receive Data (RXD) |
| 3 | 3 | Transmit Data (TXD) |
| 4 | 4 | Data Terminal Ready (DTR) |
| 5 | 5 | Ground (GND) |
| 6 | 6 | Data Set Ready (DSR) |
| 7 | 7 | Request to Send (RTS) |
| 8 | 8 | Clear to Send (CTS) |
| 9 | 9 | Ring Indicator (RI)/5V/12V |
| 10 | X | NC |

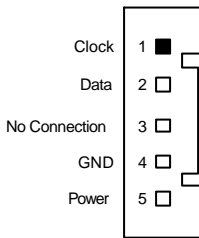


Keyboard and PS/2 Mouse Connector



Note for Keyboard:

Pin1: KBCLK
Pin2: KBDATA



Note for Mouse:

Pin1: MCLK
Pin2: MDATA

PC/104 Connectors

64-Pin Long Connector

| PIN No. | PIN Name | PIN No. | PIN Name |
|---------|-----------|---------|-----------|
| 1 | IOCHCHK * | 2 | 0V |
| 3 | SD7 | 4 | RESETDRV |
| 5 | SD6 | 6 | +5V |
| 7 | SD5 | 8 | IRQ9 |
| 9 | SD4 | 10 | -5V |
| 11 | SD3 | 12 | DRQ2 |
| 13 | SD2 | 14 | -12V |
| 15 | SD1 | 16 | ENDXFR * |
| 17 | SD0 | 18 | +12V |
| 19 | IOCHRDY | 20 | (KEY) |
| 21 | AEN | 22 | SMEMW * |
| 23 | SA19 | 24 | SMEMR * |
| 25 | SA18 | 26 | IOW * |
| 27 | SA17 | 28 | IOR * |
| 29 | SA16 | 30 | DACK3 * |
| 31 | SA15 | 32 | DRQ3 |
| 33 | SA14 | 34 | DACK1 * |
| 35 | SA13 | 36 | DRQ1 |
| 37 | SA12 | 38 | REFRESH * |
| 39 | SA11 | 40 | SYSCLK |
| 41 | SA10 | 42 | IRQ7 |
| 43 | SA9 | 44 | IRQ6 |
| 45 | SA8 | 46 | IRQ5 |
| 47 | SA7 | 48 | IRQ4 |
| 49 | SA6 | 50 | IRQ3 |
| 51 | SA5 | 52 | DACK2 * |
| 53 | SA4 | 54 | TC |
| 55 | SA3 | 56 | SALE |
| 57 | SA2 | 58 | +5V |
| 59 | SA1 | 60 | OSC |
| 61 | SA0 | 62 | 0V |
| 63 | 0V | 64 | 0V |

40-Pin Short Connector

| PIN No. | PIN Name | PIN No. | PIN Name |
|---------|-----------|---------|----------|
| 1 | 0V | 2 | 0V |
| 3 | MEMCS16 * | 4 | SBHE * |
| 5 | IOCS16 * | 6 | LA23 |
| 7 | IRQ10 | 8 | LA22 |
| 9 | IRQ11 | 10 | LA21 |
| 11 | IRQ12 | 12 | LA20 |
| 13 | IRQ15 | 14 | LA19 |
| 15 | IRQ14 | 16 | LA18 |
| 17 | DACK0 * | 18 | LA17 |
| 19 | DRQ0 | 20 | MEMR * |
| 21 | DACK5 * | 22 | MEMW * |
| 23 | DRQ5 | 24 | SD8 |
| 25 | DACK6 * | 26 | SD9 |
| 27 | DRQ6 | 28 | SD10 |
| 29 | DACK7 * | 30 | SD11 |
| 31 | DRQ7 | 32 | SD12 |
| 33 | +5V | 34 | SD13 |
| 35 | MASTER * | 36 | SD14 |
| 37 | 0V | 38 | SD15 |
| 39 | 0V | 40 | (KEY) |

Warranty

This product is warranted to be in good working order for a period of one year from the date of purchase. Should this product fail to be in good working order at any time during this period, we will, at our option, replace or repair it at no additional charge except as set forth in the following terms. This warranty does not apply to products damaged by misuse, modifications, accident or disaster. Vendor assumes no liability for any damages, lost profits, lost savings or any other incidental or consequential damage resulting from the use, misuse of, or inability to use this product. Vendor will not be liable for any claim made by any other related party. Return authorization must be obtained from the vendor before returned merchandise will be accepted. Authorization can be obtained by calling or faxing the vendor and requesting a Return Merchandise Authorization (RMA) number. Returned goods should always be accompanied by a clear problem description.