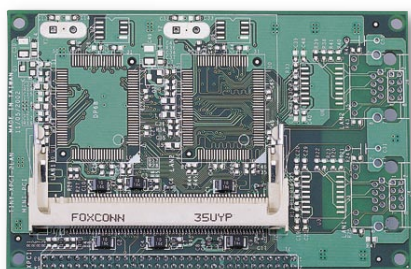


Vortex86-6083-Mini-PCI

Tiny x-PCI to Mini-PCI Module



Mini-PCI Wireless LAN Card

Mini-PCI 802.11b LAN Card



Specifications

Function	Mini-PCI resolves the mechanical constraint of Standard PCI, Type III Mini-PCI is a 124-pin connector interface uses the card edge type connector similar to the SODIMM
Bus	32-bit x-PCI interface, compatible with PCI Rev.2.2, PC 98/99
Connectors	0.8mm 124-pin Mini-PCI card connector x1
Weight	32g
Board Size	100 X 66mm (3.93 x 2.59 inches)
Operating Temperature	0°C ~ +70°C

Packing List

- Vortex86-6083-Mini-PCI x1

x-PCI Wireless LAN Kit



Antenna

Specifications

Chipset	Realtek 8180L single chip, compatible with IEEE 802.11b Support 11 channels (US, Canada), 13 channels (ESTI), 14 channels (Japan)
Bus	Mini-PCI Spec. V1.0
Form Factor	Mini-PCI Type IIIB
Modulation Type	CCK, BPSK, QPSy, K
Frequency Band	2400~2483.5MHz (for US, Canada, ESTI), 2400~2497MHz (for Japan)
Receiving Sensitivity	Min. -80dBm for 11Mbps (@BER 10E) Min. -84dBm for 5.5/2/1 Mbps (@BER 10E)
Data Transfer Rate	1/2/5.5/11Mbps
Power Requirement	Single Voltage +3.3V Tx Mode 350mA (Max.), Rx Mode 150mA (Max.)
Weight	15g
Operating Temperature	0°C ~ +70°C

Packing List

- Mini-PCI Wireless LAN Card x1