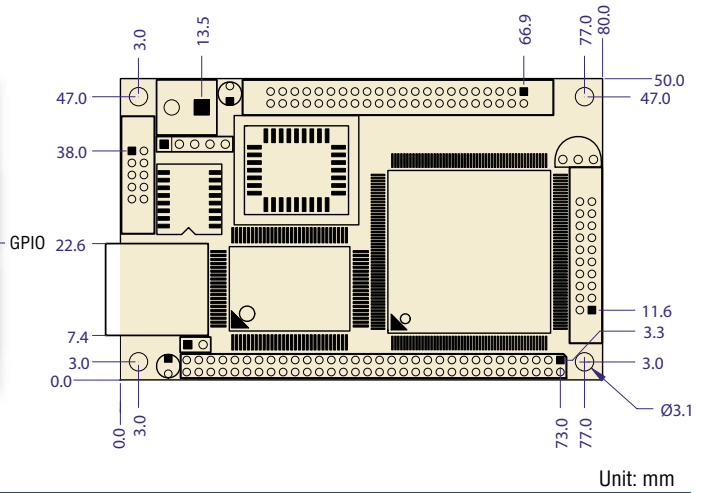
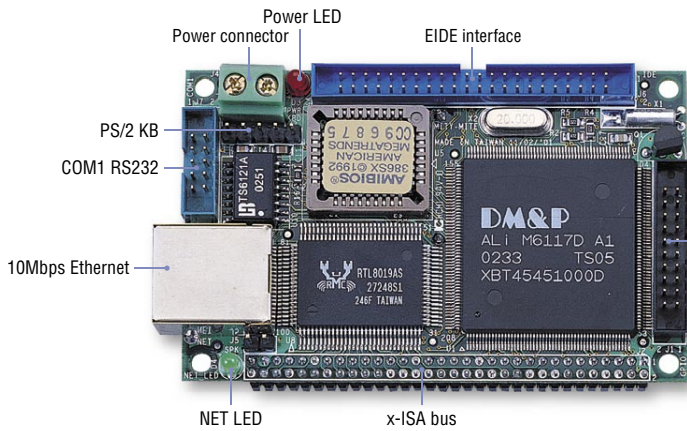


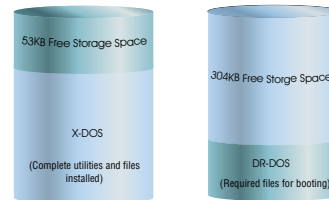
Mity-Mite Module

4MB/1S/IDE/LAN/GPIO

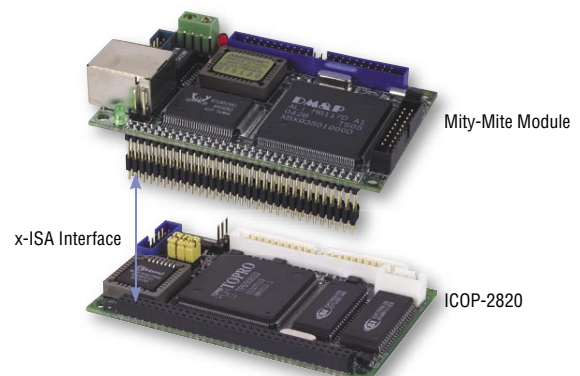


Specifications

SoC	DM&P(ALi) M6117D System-on-Chip CPU 386SX-40MHz Real Time Clock with Lithium Battery Backup
Bus	16-bit x-ISA interface
BIOS	AMI BIOS
System Memory	Onboard 4MB EDO RAM
Onboard Flash	512KB onboard flash with X-DOS pre-install
Watchdog Timer	Software programmable from 30.5us to 512 seconds
LAN	Realtek 8019AS 16-bit ISA Full-Duplex Ethernet Controller NE2000 compatible with built-in 16KB RAM buffer Throughput 10Mbps
Flash Disk Support	MSTI EmbedDisk Module (16MB and above) PQI DiskOnModule (16MB and above)
I/O Interface	Enhanced IDE port x1 RS-232 port x1 16-bit GPIO port x1 10Mbps Ethernet port x1
Connectors	2.0mm 64-pin header for 16-bit x-ISA interface 2.0mm 44-pin box header for IDE x1 2.0mm 10-pin box header for RS-232 x1 2.0mm 20-pin box header for 16-bit GPIO x1 2.54mm 5-pin header for Keyboard x1 External RJ-45 connector for Ethernet x1
Power Requirement	Single Voltage +5V @420mA
Weight	56g
Board Size	80 X 50mm (3.14 x 1.96 inches)
Operating Temperature	-20°C ~ +70°C



512KB Onboard Flash reserves free storage space of 53KB (X-DOS) or 304KB (DR-DOS)



VGA function support via x-PCI interface

Packing List

- Mity-Mite CPU Module x1
- Cable
 - HDD 44P (2.Q) x1
 - RS-232 (2.Q) x1
 - GPIO (2.Q) x1
 - PS/2 KB White x1

Ordering Information

- ICOP-6017-D** M6117D Mity-Mite CPU Module with DR-DOS pre-install
- ICOP-6017-X** M6117D Mity-Mite CPU Module with X-DOS pre-install
- ICOP-2820** Mity-Mite VGA/LCD Development Kit

1 Mity/Tiny Module

2 PC/104 Module

3 3.5"/ATX Module

4 Half-Size Module

5 Peripheral Module

6 Accessories